




<b>MANCHESTER COUNTY BRIDGE</b> Boris Ewart 66, Rockingham Close Birchwood Warrington Cheshire WA3 6UY Tel:01925 838916 Email: <a href="mailto:robie-straw@supanet.com">robie-straw@supanet.com</a>	<b>ASSOCIATION NEWSLETTER</b> <b>EDITORIAL</b> The MCBA has taken on the running of the <b>Camrose</b> match between England and the Republic of Ireland to take place over the week-end of 6-7 <sup>th</sup> December 2003. The venue is Cheadle House, Cheadle Business Park, Cheadle Road, S.Manchester next to John Lewis on the A34. The last time we held a <b>Camrose</b> was in the 1970's so this is a rare event.  At the same time the more friendly battle between the two countries known as the <b>Corn Cairdis</b> will also take place.	<b>DECEMBER 2003</b> Please come along and support this venture. You can kibitz your favourite players or watch matches on Vu-Graph and listen to the informed and irreverent commentary. As a result of this venture the date of the <b>Ben Franks</b> has been moved to <b>8<sup>th</sup> February 2004</b> – still at Manchester Bridge Club.  Also enclosed in this issue is the entry form for our popular 'new year' congress.
<b>MANCHESTER CBA WEBSITE</b> <a href="http://www.lighton.btinternet.co.uk">www.lighton.btinternet.co.uk</a>  e-mail Rodney Lighton at <a href="mailto:lighton@btinternet.com">lighton@btinternet.com</a>		

<b>SELECTIONS</b> <b>CUMBRIA + result</b> D. Stuart P. Barlow IMP – 16. C. Bloch P. Hodgson IMP +7 D.N.Daji J. Farmer IMP –28 M.J. Rosenbaum R. Steedman IMP –17 A. Green G. Griffiths D. Pennington M. Castaglioia H. Stubbings J.M. Laughton E.L. Rosenbaum P.M. Crooks	<b>TOLLEMACHE - revised</b> Bill Hirst Dave Debbage Alan Jones Michael Byrne Leslie Klein Jeff Smith npc John Hassett Mike Newman Dave Barton Alex Morris Jeff Morris  <b>World Championships – Monte Carlo: Venice Cup</b> Michelle Brunner & Rhona Goldenfield <b>Seniors</b> Bernard Goldenfield	<b>RESULTS</b> <b>GOLD CUP 2003 Round 5.</b> Dave Debbage, Edward Levy, Mike Newman, Michael Byrne, Alex Morris and Jeff Morris beat Marc Smith's team to reach the Quarter finals in Peebles – well done.
--	---	--

<b>FUTURE EVENTS</b> <b>DEC 2003</b> 5-7 Nat Womens TBA Tms 6 Waterworth Merseyside Pairs GP BC <b>6-7 Camrose Cheadle</b> <b>R.Ireland v House C.B.P.</b> <b>England + Cheadle</b> <b>Corn Cairdis Road</b> <b>S.Manchester</b> 12-14 SBU Gold Peebles Cup Cong 21 Santa Claus Man BC Pairs 19-21 Jun Channel Netherlands Trophy 28-30 EBU Year Hilton, End Cong Blackpool	<b>JAN 2004</b> 3-4 <b>Manchester Renaissance</b> <b>Congress Hotel</b> 3-4 Open Trials IIIA TBA 10-11 Camrose v N.Ireland N.Ireland 11 Gold Cup Rd 1 (Deadline) 13-14 BGB Winter Sim Prs Clubs 17-18 Nat Sw Leeds TmsCongress 17-18 Women's Trials IIA TBA 17-18 Chester Congress Deva BC 24-25 NatWomen&MenPrs Coventry 24-25 Junior Camrose RepofIreland 25 Evening Post Pairs Preston	<b>FEB 2004</b> <b>1 Gazette (Tms-of-8) Man BC</b> 7-8 Womens Trials IIB TBA 6-11 EBU Nat GP Cong Estoril 8 Doyle Cup Sw Tms Southport BC <b>8 Ben Franks Man BC</b> 14-15 Tollemache Final Coventry 21-22 Camrose v Wales England 22 LCBA Butler Pairs Blackburn BC 27-29 Spring Congress Harrogate 27-29 Open Trials IIIB TBA 28-29 Senior's Trials I TBA 28-29 Womens Trials IIIA TBA
---	--	--

**CAMROSE & CORN CAIRDIS IN MANCHESTER  
CHEADLE HOUSE,  
CHEADLE ROYAL BUSINESS PARK –  
CHEADLE ROAD next to JOHN LEWIS A34.  
DECEMBER 6-7 2003 – SPECTATORS FREE.**

<b>England Camrose Team:</b> Gary Hyett & Alan Mould Paul Bowyer & Martin Jones Gunnar Hallberg & Nick Sandquist NPC – John Williams	<b>England Corn Cairdis Team:</b> Dennis Robson Jeff Morris Philip Mason Peter Stocken	<b>Kevin &amp; Celia Comrie</b> <b>Irving &amp; Joy Blakey</b> <b>Marcello &amp; Elena Rosenbaum</b> <b>Peter &amp; Joyce Hishmurch</b>
--	--	--

<p><b>New League Structure 1A &amp; 1B. .</b> <b>By Boris Ewart</b></p> <p>The league structure will be changed in the near future – probably at the start of next season – to split divisions <b>1A</b> and <b>1B</b> into tiered divisions with promotion going from <b>1B</b> to <b>1A</b> and then into the <b>Premier</b> division. The transition criteria has not been decided but will be publicised in due course. My guess is that if you finish in the top part of <b>1A</b> and <b>1B</b> this year you are more likely to be in the new <b>1A</b> next year.</p>	<p>You play in 4♠ after W has bid ♣ twice and E has bid ♥ and then supported ♣. The ♥K is led. You win the ♥A and play ♠Q to W ♠A. W continues ♥10 which you duck and then cashes ♦A and exits with a small ♦. You draw trumps West following to 2 more rounds. If ♦ are 3-3 then you are home. W who holds at least 5♣, 3♠ and 2♥ cannot hold more than 3♦. To cater for E holding 4♦ you play two more rounds of trumps throwing ♣. The ending now is:</p> <p>♠- ♥J6 ♦K ♣A</p>  <p>♠3 ♥- ♦106 ♣8</p> <p>Now when you cross to ♣A, E holding: ♥Q9 ♦J7</p> <p>is trump squeezed. If E throws ♥9, you ruff ♥6 and cross back to ♦K to cash the ♥J. If E throws ♦7, you cash ♦K and ruff ♥6 to enjoy the ♦10.</p>	<p>For a trump squeeze to operate, you need two entries opposite the last trump (though one (♠A) here can be in the squeeze suit itself as in this example). The defence could have tried to wreck this ending simply by knocking out the ♣A early on. <b>Editor</b> – However we then come down to:</p> <p>♠- ♥J6 ♦KQ ♣</p>  <p>♠3 ♥- ♦1063 ♣</p>
<p><b>Southport Congress Teams - 2003</b> <b>By Jeff Smith</b></p> <p>♠Q106 ♥AJ63 ♦KQ5 ♣A54</p>  <p>♠KJ9853 ♥72 ♦10632 ♣8</p>		<p>This time E cannot keep 2♥ and 3♦. If E has discarded the ♥9 then cross to ♦Q and ruff ♥6 then back to ♦K to cash ♥J. If E has discarded ♦4 then cash ♦KQ and ruff ♥6 to cash ♦10. This is the rare <b>Criss-Cross Trump Squeeze</b>.</p> <p>(W should have held up the ♦A and switched to ♣ after the ♥10. When he later wins ♦A he continues ♦ to break up the squeeze.)</p>

<p><b>Manchester Congress by Irena Grugulis</b></p> <p>For everyone who is deprived of bridge over the festive season (and even those who see the holidays as an opportunity to get some practice in) the <b>Manchester Congress</b>, which this year is being held on 3<sup>rd</sup> – 4<sup>th</sup> <b>January</b>, will provide some pleasant relief. This will be the fourth time we have run this event and the venue is again the <b>Renaissance Hotel</b> in the centre of town. Shopaholics can enjoy the sales, visit the new Harvey Nicks and choose between an enviable selection of restaurants during the break (although last year I confess that my team were so overwhelmed by the choice we ended up in McDonald's).</p>	<p>As everyone who has supported the event in the past will know, we try to make this the friendly congress so that people can enjoy some excellent games of bridge as well as a pleasant and sociable atmosphere. As before, in addition to the Championship Pairs (on the Saturday) and the Championship Teams (on the Sunday) there are four separate novice events. This means that people new to the game can participate in one, two, three or four sessions without being hurried on at the end of a round or baffled by complicated systems. Even if the only bridge you have ever played is around the kitchen table do join in – you may even acquire a taste for competition.</p>	<p>Prizes are generous. In addition to the awards for the main events there are trophies for the leading intermediate, mixed, women's and men's pairs, a selection of prizes for the novices (including wine and books) and the usual array of spot prizes (in the past winners have enjoyed meals in restaurants, bottles of champagne and even bridge holidays). For anyone who does not want to travel a room and breakfast at the Renaissance is £69 and the contact details are on the congress form in this issue of the <i>County News</i> and on the website – book early to ensure your place.</p>
--	--	---

<p><b>Master Points v Prizes – by Boris</b></p> <p>Some of you have mentioned that I have too many bridge hands in the newsletter and not enough on other issues so here is a controversial article. My personal view is that the quest for local/green points is a waste of time. I would far prefer that the cost of these be given back as prizes for the players. Most of you may not be aware that every local point certificate issued costs about 50p and they are issued to the top 3<sup>rd</sup> of the field. I would estimate a cost of about £20 for a small competition could be added to the prize fund if they were stopped.</p>	<p>As the E.B.U. use the Master Points scheme as a big money earner to fund various events I understand why they have them. If they have to continue then let us at least make the system more efficient. I propose that with the use of computers for scoring that all clubs could maintain records of points earned for their events. These would be sent once a year via email to the county Master Points Secretary. They would then be merged in with records maintained from county level events and sent off once a year via email to the EBU who would merge them with records from national events.</p>	<p>Once a year the EBU would send out updated Master Point rankings – as they do now back to the county and the clubs. This could also be done by email. As a result all of the silly bits of paper and extra postage could be cut out of the system and perhaps some of the money saved passed back to the players to increase the prize funds. After all one of the big reasons why support of EBU events is falling is because the prizes are at times pathetic in relation to the total cost of taking part in the event.</p> <p>What is your view?</p>
--	--	---

**The Trials of Life by Michael Byrne**

A number of local players took part in the round of England open trials at the West Midlands bridge club in Solihull on two weekends in September. This being real life and not a fairy tale they all failed to live up to their potential and none of them qualified. The bridge was of a generally high standard, with even the so-called weak teams, who nobody had ever heard of, beating us with alarming regularity. There were many interesting hands, these are just a few that cropped up in the matches between the Manchester teams.

♠J84 ♠K75  
♥J109 ♥AK8652  
♦1043 ♦A  
♣K842 ♣AQ6



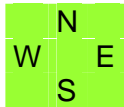
It amazes me that even in this day and age there are people who pass partner's opening 1♥ bid with the West hand. Bill Hirst took this position and duly lost 6 IMP for his side (John Holland, Michelle Brunner & John Hassett) when opposition Michael Byrne and Alex Morris zoomed into game in customary fashion.

♠AJ73 ♠KQ104  
♥- ♥Q75  
♦K8 ♦A643  
♣AK97643 ♣85



Bill got all of his IMP back with interest when Brunner/Holland bid 6♠ and then 7♠ over Alex Morris' rather ill judged sacrifice of 7♥. Jeff Smith (David Stevenson, David Barton & Alan Jones) also lost 13 IMP the painful way when Smith & Stevenson languished in game.

♠AKQ97 ♠J8  
♥8 ♥7432  
♦KQ974 ♦85  
♣J2 ♣Q7654



In the encounter between Smith and Byrne, Alan Jones went one down in a tricky 4♥ contract bid on minimal values. He was no doubt relieved to learn that this had cost only 2 IMP since his team-mates had gone for 1100 on these cards in 4♠-X after a somewhat dubious Michaels Cue-Bid at the 3-level by David Stevenson. Ever the one to take responsibility he ventured that had his partner responded 3♠ instead of 4♣ (Pass/Correct) they would not have been doubled.

In the final match of the 2<sup>nd</sup> round robin, Byrne lost by 15 IMP to Forrester (who they had beaten by 17IMP the previous weekend) to leave the last qualification spot open. Although Smith won their match against Waterlow it wasn't by enough and the two Manchester teams in contention finished 6<sup>th</sup> and 7<sup>th</sup>, with the top five to qualify.

**Junior Butler Pairs – M.B.C. by Boris.**

A few of us turned up to give the British junior squad a workout. This hand has a few discussion points:

♠A8732  
Dealer E ♥9752  
N-S Vul ♦92  
♣95  
♠106 ♠J4  
♥A106 ♥3  
♦J105 ♦AQ76  
♣KJ843 ♣AQ10762  
♠KQ95  
♥KQJ84  
♦K843  
♣-



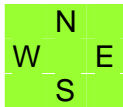
W	N	E	S
		1♣	1♥
3♣	3♥	5♣	?

1. Should S double 1♣ (T/O) with a 3-suiter or overcall 1♥ to make sure you don't lose the good 5 card major?
2. Surely W should bid 2♥ to show a full raise to 3♣.
3. N - 3♥ does not show a lot as he can double 3♣ to show a full raise.
4. E - 5♣ is an advance sacrifice if the 3♣ bid was more pre-emptive.
5. S is on the spot over 5♣. He was about to bid 4♥ but cannot be certain of making 5♥ so all he can do is double to show extra values and hope it goes off or make a reluctant pass.
6. 5♠ by N can make if E does not lead ♥3 or cash ♦A and switch to ♥3.

**Pendle Witch Pairs 2003 by John Liebeschuetz**

1<sup>st</sup> Brian Irlam Wendy Blyth  
2<sup>nd</sup> John Liebeschuetz Pete Foster  
3<sup>rd</sup> Dagmar Fazackerly Ewart Evans

Dealer S ♠A10852  
E-W Vul ♥Q  
♦AJ87654  
♣-  
♠- ♠J73  
♥A10843 ♥7652  
♦10932 ♦-  
♣A432 ♣QJ8765  
♠KQ964  
♥KJ9  
♦KQ  
♣K109



W	N	E	S
			1♠
2♥!	4♦*(1)	No	4♠(2)
No	6♠(3)	No(4)	End

1. Fit showing Jump
2. Perhaps a little feeble
- 3...but partner makes up for it
4. A lead directing double is called for.

Pete Foster decided with his freakish hand, that slam was likely to always have chances and just punted it. A more cautious approach would be to bid 5♣ over 4♠ and then bid 6♠ over the 5♦ cue bid. This, as it happens, would not have led to a happy ending. The ♣A was led and determined to give me kittens, Pete first carefully placed his singleton ♥Q on the table. When he failed to put down any clubs my equilibrium was restored and thirteen tricks were duly wrapped up. We were lucky that W chose not to lead ♥A (as would likely have happened if N had cue-bid 5♣) as then the ♦ shift would have been obvious and fatal. However W doesn't have to guess which A to lead if her partner is able to employ that rare but useful animal, the **Lightner Double**. This would call for an unusual lead, in this case clearly ♦. Result: 2 off for +300.

**Southport Congress Pairs 2003 by Boris.**

Dealer N ♠AJ86  
Love All ♥84  
♦72  
♣AQJ107  
♠4 ♠J53  
♥A109 ♥KQJ652  
♦J10932 ♦KQ86  
♣K982 ♣-  
♠KQ1072  
♥93  
♦A5  
♣6543



W	N	E	S
	1♣	1♥	2♠*
3♥	4♠	5♥	No
No	5♠	End	

2♠ is a fit jump showing 5♠-4♣ and values for 3♣. The defence started ♥A and ♥10 on which E dropped ♥2. Why W did not give E a ♣ ruff I do not know. W then switched to ♦J to ♦A. It is only the poor ♣ pips with S and the 1-3 ♠ split that now stops 5♠ making.

**Christmas Quiz by Boris Ewart**

Hand 1  
Dealer N  
Love All

♠KJ942  
♥J98  
♦32  
♣843

	N	
	S	

♠AQ3  
♥K4  
♦AKQ4  
♣AK62

W	N	E	S
No	No	2♥*	X
No	2♠	No	3♥
No	4♠	No	6NT

W leads ♣Q – E follows ♣7. Can you work out the full hand to make this contract? (Clue - E has no singleton and you cannot make 6♠).

Hand 2  
Dealer E  
N-S Vul

♠A72  
♥A  
♦K96532  
♣J82

	N	
	S	

♠J  
♥KJ97543  
♦A4  
♣Q65

W	N	E	S
1♠	2♦	2♥*	1♥
No	4♥	X	3♥
			End

W leads ♠K. Can you make this contract? (W follows ♥2 when the ♥A is played).

Hand 3  
Dealer S  
E-W Vul

♠KQJ6  
♥K5  
♦A7643  
♣A7

	N	
W		E
	S	

W	N	E	S
X	No	6♣	5♦
?			No

What is your bid?

Hand 4  
Dealer W  
Game All  
IMP.

♠KQJ85  
♥95  
♦J94  
♣AQ7

♠4  
♥A62  
♦A108752  
♣1063

	N	
W		E
	S	

W	N	E	S
2♦*	2♠	No	2NT
No	3NT	End	

You decide to lead ♠4 taken by ♣A. E follows ♣4 and S ♣8. S plays ♦4 next to E ♦3 and S ♦Q. How do you defend?

Hand 5  
Dealer N  
N-S Vul

♠KQ85  
♥K75  
♦K863  
♣94

	N	
W		E
	S	

W	N	E	S
No	No	No	1♦
No	1♥	No	2NT
No	3NT	End	

2NT is 18-19. What is your lead?

Solutions will be posted on the MCBA web-site after Christmas.

**Great Northern Swiss Pairs 2003 by John Liebeschuetz**

1<sup>st</sup> Nevena Senior Sandra Penfold  
2<sup>nd</sup> Alan Stephenson Stuart Matthews  
3<sup>rd</sup> Degsey Williams Croz Croswell

The hand I enjoyed most was making 4♥ as S on this board of session 1. I was a bit lucky in that I could play it almost double dummy after the opponents had obliging revealed their distribution in the bidding.

Board 2  
Dealer E  
N-S Vul

♠953  
♥A764  
♦AK2  
♣AK5

♠QJ7  
♥K953  
♦Q8  
♣J984

	N	
W		E
	S	

♠K10864  
♥10  
♦J10753  
♣Q3

♠A2  
♥QJ82  
♦964  
♣10762

W	N	E	S
No	1♣(1)	No	No
2♠	X(4)	1NT(2)	X(3)
No	6♠(3)	No(4)	4♥
			End

1. Precision 16+ or 17+Bal  
2. ♠ + ♦  
3. 5-7 points  
4. Take-Out

Lead was ♠Q, ducked, ♠J won, ♥Q to K, A and a revealing ♥10, 4 top minor winners and then a ♠ ruff followed by a ♣ exit taken by W. The ♣ return was ruffed in dummy and, on the play of a ♦, W had to ruff her partner's winner and was then left high and dry by being forced to lead away from ♥9x into the ♥J8 tenace. 10 tricks.

**RAYMOND'S PLAY PROBLEM. By Raymond Semp.**

♠A82  
♥A1094  
♦A42  
♣AK10

	N	
	S	

♠K54  
♥KQJ  
♦J53  
♣QJ98

South is to make 6NT on the lead of ♠Q – E follows ♠9. Both ♥ and ♣ are 3-3. On the 4<sup>th</sup> ♥ W discards the ♠3 and E the ♦8.

Entries to my email address or by post. Prize - 'Bridge Squeezes Interpreted' by Raymond Semp to the first correct answer opened.

**ANECDOTE**

In a local duplicate the bidding was:

W	N	E	S
			No
1♣	1♠	3♣	4♥*

W now asked the question 'What does the 4♥ bid show?' N replied 'It's a Jump Fit'. W then continued 'Is that shortage or a suit?'

(If you don't get the joke – the answer would have been a Splinter bid if 4♥ showed shortage so the 2<sup>nd</sup> question is somewhat rhetorical.)

**BIDDING PROBLEM.**

In the same duplicate this hand came up. How do you bid it confidently to 7♥?

♠K742  
♥10964  
♦KQ65  
♣7

	N	
	S	

♠A53  
♥AKQJ7  
♦AJ4  
♣A85